

Read the Spelling Words and sentences.

Basic

VCCV

1.

2.

3.

4.

5.

6.

7.

8.

9.

VCCCV

10.

11.

12.

13.

14.

VCV

15.

16.

17.

18.

19.

20.

1. entry

entry

2. limit

limit

3. talent

talent

4. disturb

disturb

5. entire

entire

6. wisdom

wisdom

7. dozen

dozen

8. impress

impress

9. respond

respond

10. fortress

fortress

11. neglect

neglect

12. crystal

crystal

13. kitchen

kitchen

14. forbid

forbid

15. pirate

pirate

16. spinach

spinach

17. salute

salute

18. frighten

frighten

19. surround

surround

20. challenge

challenge

Review

21. honest

22. instead

23. whether

24. event

25. attend

Challenge

26. adapt

27. refuge

28. distribute

29. industry

30. somber

Think and Sort

Each two-syllable word has the VCCV, VCCCV, or VCV syllable pattern. Memorize the spelling of the unstressed syllable.

re / spond (rĭ spŏnd´) wis / dom (wĭz´ dəm)

Write each Basic Word under its syllable pattern. Underline the unstressed syllable. Use your Spelling Dictionary to check your work.

Fill out an **entry** blank for the contest.
Do not go faster than the speed **limit**.
Will Jim play guitar in the **talent** show?
Do not **disturb** the sleeping baby.
We must clean the **entire** house by 5 P.M.
Wisdom helps you make good decisions.
A **dozen** roses plus one is thirteen.
Each skater tries to **impress** the judges.
Please **respond** to the e-mail I sent.
Cannons lined the top of the **fortress**.
Broken floorboards are signs of **neglect**.
Clean the **crystal** glasses carefully.
Who is preparing dinner in the **kitchen**?
I **forbid** you to read my diary!
The **pirate** looked for ships to attack.
Spinach is a green, leafy vegetable.
Soldiers **salute** officers to show respect.
Your dog's howls **frighten** children.
Will you **surround** the yard with a fence?
I **challenge** you to a game of chess.

Word Analysis/Phonics

Write the Basic Word that contains the given spelling for each sound.

21. /ch/ spelled *tch* 23. /j/ spelled *ge* 25. /i/ spelled *igh*
22. /i/ spelled *i* 24. /i/ spelled *y*

Vocabulary: Analogies

Write the Basic or Review Word that best completes each analogy.

26. *Vegetable* is to _____ as *fruit* is to *lemon*.
27. *Lazy* is to *diligent* as *untruthful* is to _____.
28. *Three* is to *trio* as *twelve* is to _____.
29. *Region* is to *territory* as _____ is to *occurrence*.

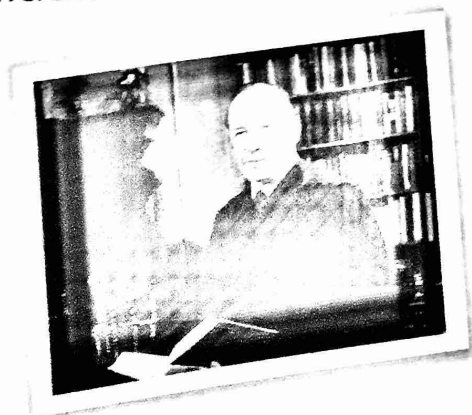
Challenge Words

Write the Challenge Word that completes each riddle. Use your Spelling Dictionary.

30. If you are unhappy and gloomy, what are you?
31. If you change in response to situations, what do you do?
32. If you are in a safe area, what kind of place are you in?
33. If you pass something out in portions, what do you do?
34. If you provide a large-scale manufacture of goods, what are you?

Spelling-Meaning Connection

- 35–36. The words *wise* and *wisdom* are related in spelling and meaning. If you are wise, you have good judgment, or wisdom. Write *wise* and *wisdom*. Underline the vowel that is the same in each but has a different sound.



wise
wisdom

Word Analysis

21. _____
22. _____
23. _____
24. _____
25. _____

Analogies

26. _____
27. _____
28. _____
29. _____

Challenge Words

30. _____
31. _____
32. _____
33. _____
34. _____

Spelling-Meaning

35. _____
36. _____



With a family member, take turns printing the first and last letters of a Spelling Word on a card, with blanks in between. The other person finishes the word.

Word Structure

Word Structure: The Word Root *press*

Practice Each word in the box contains the word root *press*, which means "to press." Write the word for each meaning. Use your Spelling Dictionary.

impress	depress	expressive	suppress
compress	oppressive	decompress	pressurize

1. to press together
2. showing feelings
3. to maintain normal air pressure inside an enclosed space
4. to make sad
5. very harsh or restrictive
6. to have a favorable effect
7. to stop or prevent an activity
8. to relieve pressure



Dictionary

Dictionary: Multiple-Meaning Words

A dictionary entry may include more than one meaning for a word. Each definition is numbered.

crystal (kris' təl) *n., pl. crystals* 1. A solid piece of matter that has a regular pattern of flat surfaces and angles between the surfaces.
2. Glass that is clear, colorless, and of high quality.

Practice Write *crystal 1*, *crystal 2*, *salute 1*, *salute 2*, *entry 1*, *entry 2*, or *entry 3* to show which meaning of the word makes sense in the sentence. Use your Spelling Dictionary.

9. The store sells expensive crystal and silverware.
10. The soldiers will salute the president of the United States.
11. Marty found a large crystal embedded in the rock.
12. Vince rang the doorbell at the entry of the building.
13. Presidents often salute ambassadors by hosting special dinners.
14. Nate wrote an entry in the hotel guest book.

Proofread a Travel Article

Spelling and Possessive Pronouns Use proofreading marks to correct **eight** misspelled Basic or Review Words and **two** mistakes in using possessive pronouns in this travel article.

Example: The Alamo will ^{impress its} impress its visitors.

The Alamo Brings History to Life!

In late 1835, Texans captured a fortteress called the Alamo. They wanted Texas to be independent insted of being part of Mexico. They enemy was Santa Anna, a Mexican general. He planned to surrounde and attack the Alamo. His's forces numbered several thousand.

In 1836, fewer than two hundred men held the Alamo. They didn't know wether they could win, but this did not friten them. They were ready to raspond to any challenge. The Texans fought bravely during the final assault, but by March 6, the entyre group had perished. Make plans now to visit the Alamo and atend an event to salute its heroes.



Proofreading Marks

- ↵ Indent
- ^ Add
- ⊙ Add a period
- ✂ Delete
- ≡ Capital letter
- / Small letter

Basic

entry
limit
talent
disturb
entire
wisdom
dozen
impress
respond
fortress
neglect
crystal
kitchen
forbid
pirate
spinach
salute
frighten
surround
challenge

Review

honest
instead
whether
event
attend

Challenge

adapt
refuge
distribute
industry
somber

Write a Travel Article

prewrite → draft → revise → proofread → publish

Write a brief travel article about a historical site you want to visit.

- Explain **why the site is important** and **why people should visit it**.
- Use some Spelling Words and possessive pronouns.
- Proofread for **spelling** and correct use of **possessive pronouns**.



Test Tip Read each answer choice before deciding on an answer.

Test Format Practice

Example:

(A) (B) (C) (D)

Directions For Numbers 1 through 8, choose the word that is spelled correctly and best completes the sentence.

Example: Kent will _____ to the letter.

- A rispond
- B reespond
- C respond
- D raspond

Answer Sheet

1. (A) (B) (C) (D)
2. (F) (G) (H) (J)
3. (A) (B) (C) (D)
4. (F) (G) (H) (J)
5. (A) (B) (C) (D)
6. (F) (G) (H) (J)
7. (A) (B) (C) (D)
8. (F) (G) (H) (J)



More Practice

Now write each correctly spelled word on a sheet of paper.

1. Mary Ann has musical _____.

- A talant
- B tallant
- C talent
- D tallent

2. Do not _____ the flower garden.

- F neglect
- G nigneckt
- H naglect
- J nagleckt

3. The time _____ is ten minutes.

- A limmit
- B limit
- C limet
- D limmet

4. Pool rules _____ running.

- F forrbid
- G fourbid
- H forebid
- J forbid

5. Do not _____ the sleeping baby.

- A disturb
- B disterb
- C desturb
- D desterb

6. Will Herman accept the _____?

- F challange
- G challege
- H challenge
- J chalenge

7. The chef is preparing _____.

- A spinnich
- B spinich
- C spinnach
- D spinach

8. Trees _____ our house.

- F saround
- G surround
- H suround
- J sirround



Spelling Games

www.eduplace.com/kids/sv/
Review for your test.